



#### With dual light function

White: Work lamp  
Amber: Ambient light

## BRIEF INFORMATION

HELLA VALUEFIT SMS2000 / Scene light

HELLA VALUEFIT SMS2000 white / amber

- Slender compact design
- Perfect design for a wide range of applications
- Homogeneous and wide-area light distribution
- New dual variant is switchable from white to amber light

## PRODUCT FEATURES

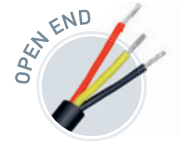
The SMS2000 LED is a flat compact LED work lamp with an attractive low-key design. The slim design for vertical wall mounting enables a perfect fitment into tight spaces and suits all vehicle lines.

Safety aspects were given special consideration in the design of the headlamp. Thanks to the compact design without protruding components or sharp edges, there is no risk of injury to people. The compact design also helps to protect the work lamp from external influences at high speeds.

The SMS2000 LED work lamp is recommended whenever effective uniform ground illumination by a vertically mounted work lamp is required. This function is particularly appreciated by campers, trucks, lorry drivers and service vehicles.

The new variant of the SMS2000 can switch between white and amber light. Experience shows that insects are attracted to cold white light. Amber ambient light, on the other hand, can help keep insects out of the area around the work lamp.

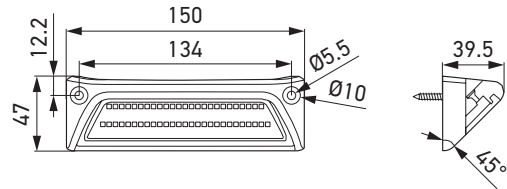
# TECHNICAL DETAILS



## Technical data

Variant	SMS2000 white	SMS2000 white/amber
Rated voltage	Multi-voltage	
Operating voltage	12 / 24 V	
Current consumption	1.6 A (12 V)/ 0.8 A (24 V)	0.8 A (12 V)/ 0.4 A (24 V)
Power consumption	19 W	10 W
Light output	2000 lm	White: 1000 lm Amber: 900 lm
Light function	Extra wide illumination	
Light source	LED	
Number of LEDs	52	White: 27 Amber: 25
Colour temperature	6,000 K	White: 6,000 K Amber: 3,000 K
Material	Housing: Die-cast aluminium	
Weight	Net weight: 245 g	
Temperature range	-40 °C to +60 °C	
Degree of protection	IP 6K9K, IP 6K8	
EMC protection	ECE-R10, UKCA, RCM	
Mounting	Flat mounting on the vehicle (including screws and rubber seals)	
Connection	Cable length: 500 mm, open cable ends	

## Dimensional sketch



## Views



Rear view



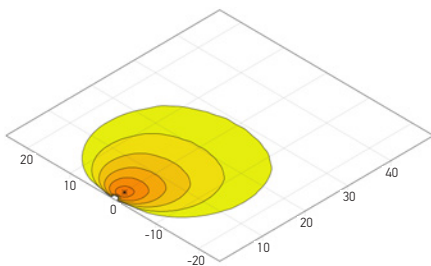
Side view



Top view

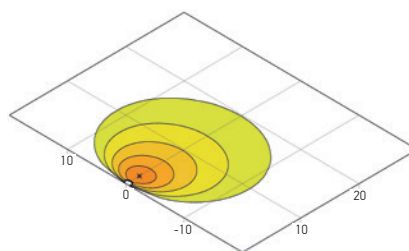
# ILLUMINATION

## Single light

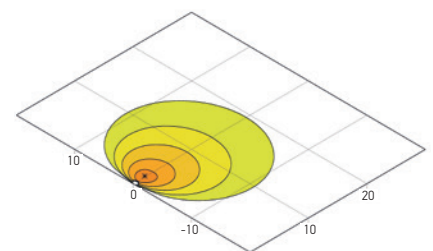


Extra wide illumination, white

## Dual function









Extra wide illumination, white



Extra wide illumination, amber



# PROGRAM OVERVIEW

Product image	Description	Illumination	Part number	PU*
	Single light, white	Extra wide illumination	1GB 357 098-001	1
	Dual function white / amber (switchable)		1GB 357 098-011	1
<b>Recommended accessories for 1GB 357 098-001 (not included)</b>				
	Fuse 12 V, 3 A		8JS 711 683-821	1
	Fuse 24 V, 2 A		8JS 711 683-841	1
<b>Recommended accessories for 1GB 357 098-011 (not included)</b>				
	Fuse 12 V, 2 A		8JS 711 683-841	1
	Fuse 24 V, 1 A		8JS 711 683 831	1

\* Packaging unit

We recommend a switch with 3 switching levels for the switchable product variant white / amber, e.g. the articles: 6FH 354 100-241 or 8RH 007 832-351 (this version in conjunction with symbol disc 9XT 713 630-371).

## APPLICATION EXAMPLE



The SMS2000 work lamp is ideal for use in the entrance area of mobile homes. Optionally with white light and ambient amber light for cosy hours in the evening.